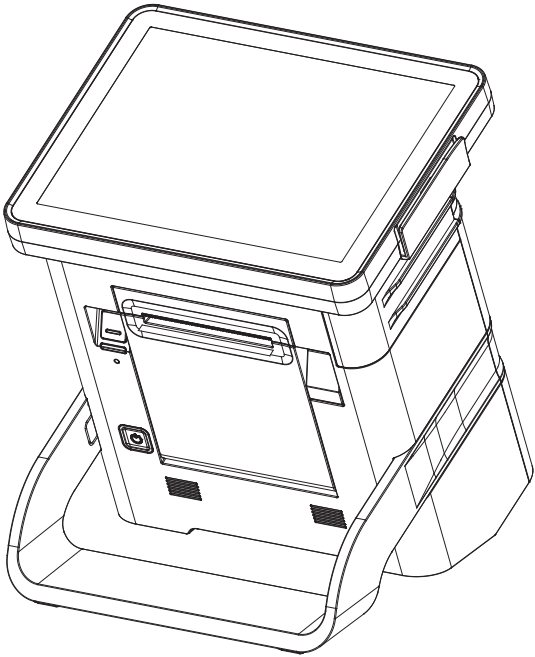


Installation Guide



DCR X86

Check the model name/utility version and download the applicable utility on www.posbank.com

⚠ Safety Instruction

● Warning

Instruction for low reliability or fire/electric shock/damage

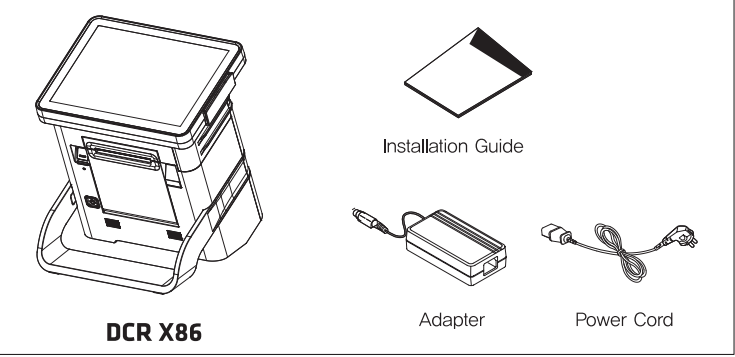
1. Do not disassemble or remodeling the products except professional engineer.
2. Do not pour water or liquid into the system.
3. Ground the the product before install the system.
4. Do not touch the power cord during extreme thunder storm.
5. Do not touch the power cord with wet hand.
6. Do not pull the power cord or other peripheral device cables.
7. If abnormal smell, sound, or smoke is occurred, remove power cord immediately and call to your close service center.
8. Do not use damaged power cord or plug (outlet).
9. Keep away the product and vinyl package from children.
 - Children can be choked, if they pull the vinyl over their head.

● Caution

1. We recommend using proper power voltage (110V/220v) as a precaution against fire and electrical shock.
2. Before install the product, check suitable and safe place to use.
 - Find well ventilated place. Avoid the place close to possibility of fire.
 - Avoid high moisture and humidity.
3. Do not install or keep the product on steep place.
 - It can cause damage or malfunction by falling (crash).
4. Be aware of electro-static on PCB of system with anti-static appliance;
 - This may cause low reliability and short life term.
5. Place a product away from highly static areas.
6. Do not put metal or obstacle on the product.
7. Use the product in simple power cord plug-in circumstance.
8. Only use adapter supplied.
 - If an incorrect adapter is used, the product's performance may decrease and there is an increased risk of explosion.
9. Use standard outer port.
 - The port can be damaged by connecting not standardized device.

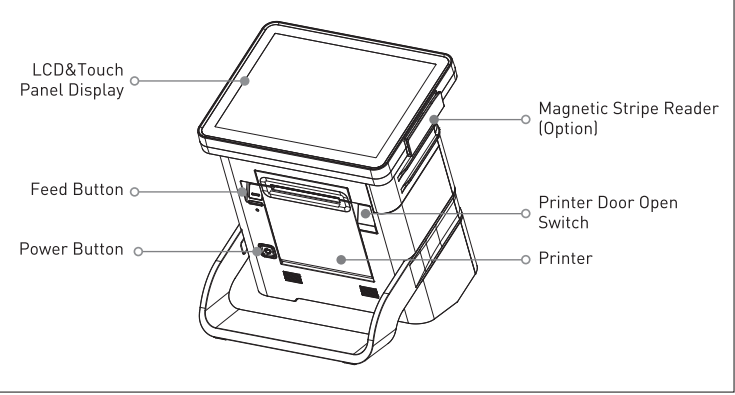
1. Packaging Contents

The following items are included when you purchase this product. If any of these items are damaged or missing, contact your dealer for assistance.

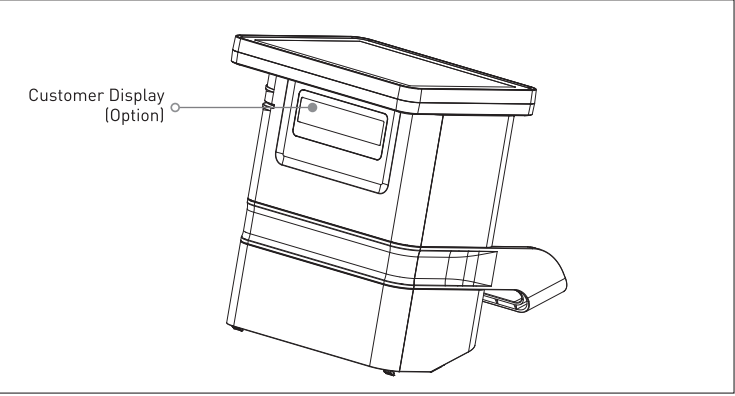


2. Terminal Layout

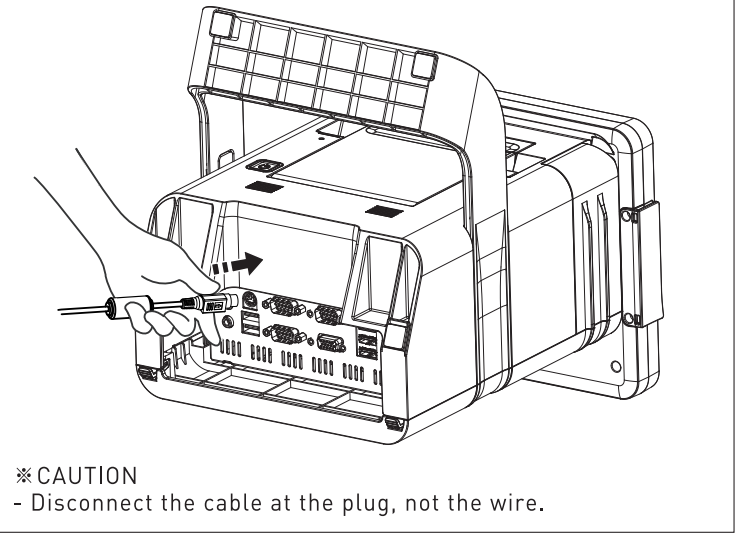
► Front View




► Back view



3. Power Connection



4. I/O Ports

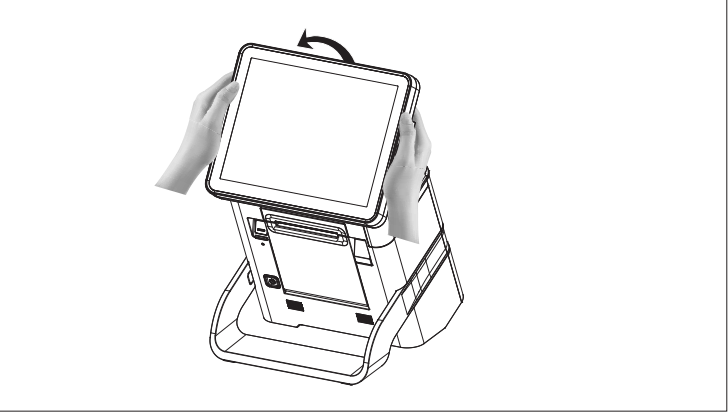


Description		Description	
1	Cash Drawer Port	7	COM2 Port
2	Power Connector / 24V	8	COM3 Port
3	USB 3.0 / 2Port	9	USB 2.0 / 2Port
4	LAN Port	10	PS/2 Port
5	VGA Port	11	Mic-in Port
6	COM1 Port	12	Audio Port

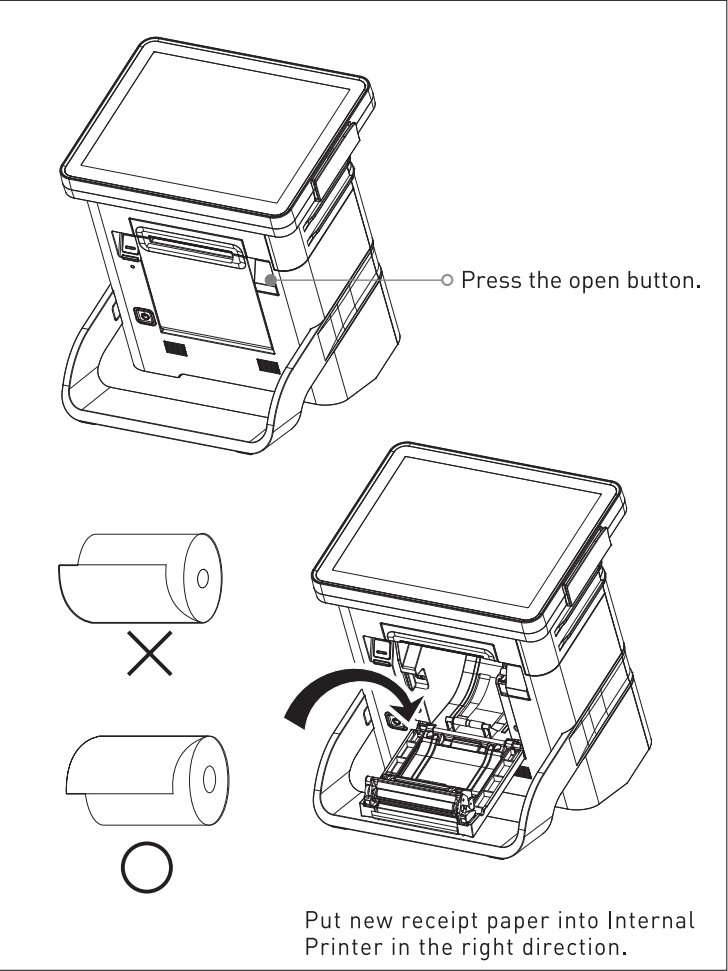
*I/O ports may differ according to product model or options.

5. The Monitor Angle

► You can adjust the monitor angle.

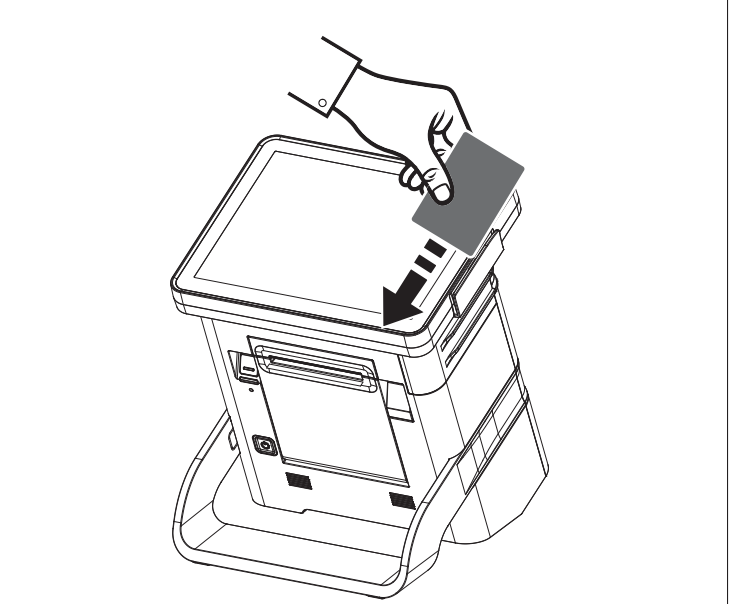


6. Receipt paper Change

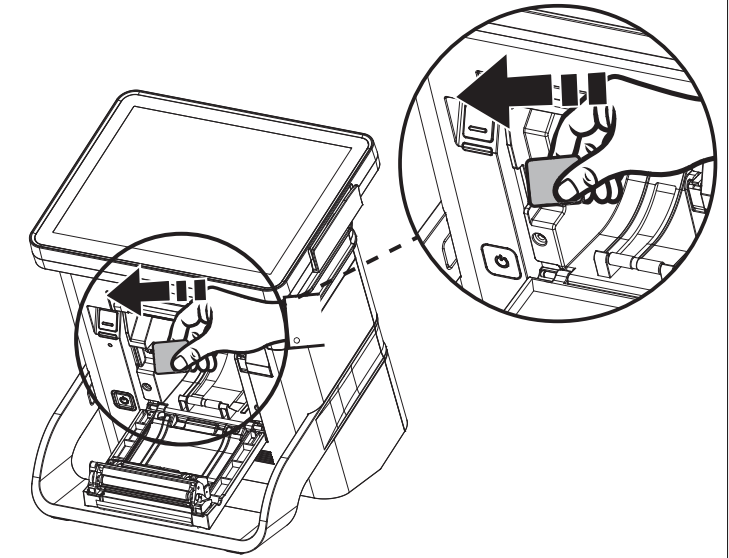


7. Optional Device

► MSR - Magnetic Stripe Reader (Option)



► SD Card - Memory (Option)



► Customer Display - (Option)

