

# DSP840

## OPOS Driver

### Operation Manuals

#### Contents

Operating System Environment.....	2
DSP840 Hardware settings. ....	3
DIP switch setting.....	3
Installation Software.....	4
Please remove the old DSP840 OPOS.....	4
Installation of the DSP840 Utility .....	4
Installation of the DSP840 OPOSLinedisplay.....	5
Software Settings and Test .....	7
Set DSP840 Communication parameter. ....	7
Set OPOSLinedisplay Communication parameter .....	8
OPOSLinedisplay Test .....	10

# Operating System Environment

- Windows7.
- Windows 10.

# DSP840 Hardware settings.

## DIP switch setting

- A. 0 means DIP switch is at OFF position.  
1 means DIP switch is at ON position.
- B. The DSP840's DIP switch setting is **Automatic command mode**, the **SW9&10** should be set to **OFF "0"** position. See **figure 1-1**.
- C. You must turn off the DSP840 power supply when you changed DIP Switch Setting.



**Figure 1-1. DIP Switch is auto.**

- D. The DSP840 device communication parameter must be the same as OPOS Linedisplay, see the "Software Settings and Test"

# Installation Software

## Please remove the old DSP840 OPOS

## Installation of the DSP840 Utility

Start setup wizard dialog by double click the [DSP840\\_Utility\\_V2\\_1\\_0\\_PDR00004.exe](#).

During the installation process, the following window appear, click on the “Next” button.

The User Account Control windows appear, click on the “Yes” button.

The ” Setup Progress” window appears, and starts the installation.

When the installation is completed successfully, click on the “finish” button.

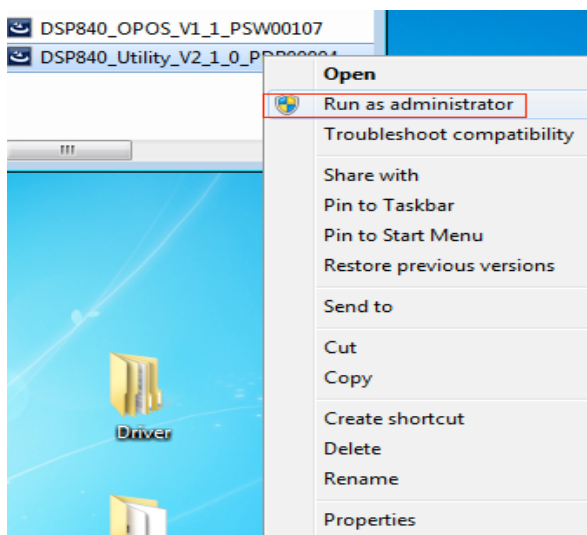


Figure 1.

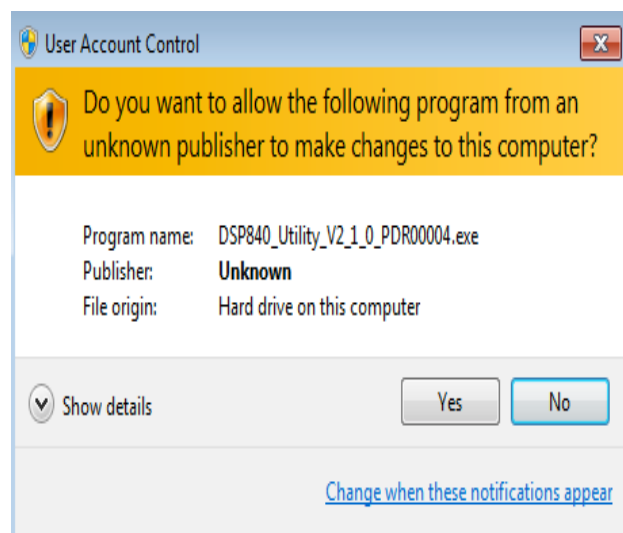


Figure 2.

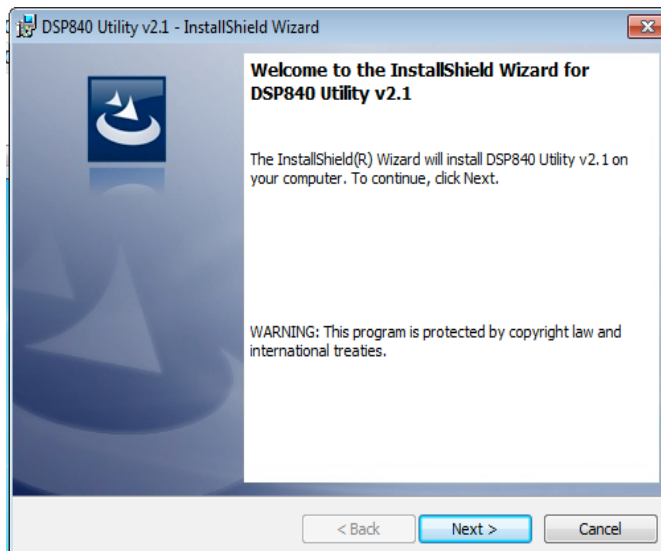


Figure 3.

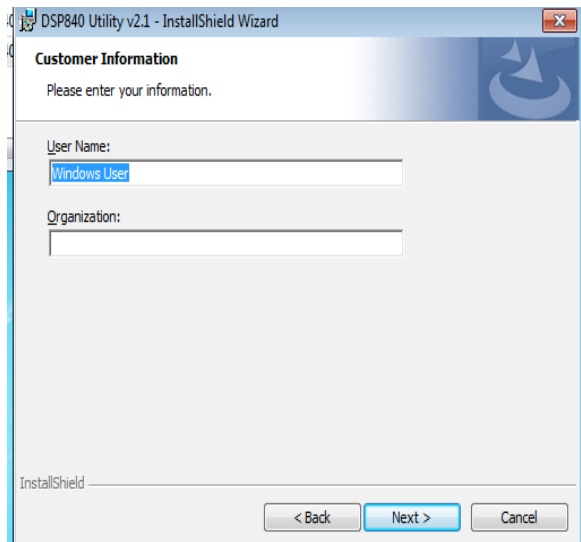


Figure 4.

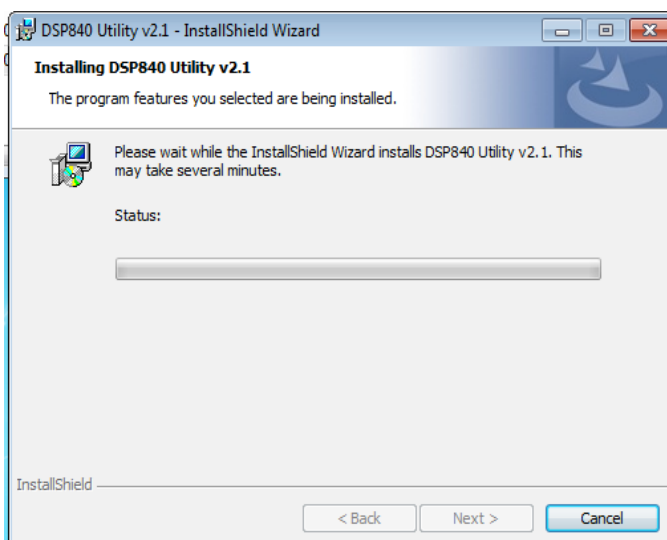


Figure 5.

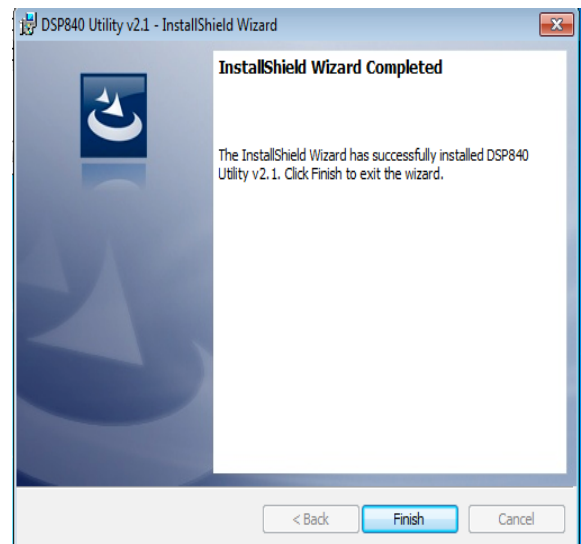


Figure 6.

## Installation of the DSP840 OPOS

Run setup wizard by double clicked the “[Setup\\_OPOSLineDisplay.msi](#)”,  
 The Install-shield wizard windows appear, click on the “Next” button.  
 The “License Agreement” window appears. Confirm the contents. If you agree, click on the “Yes” button.  
 The Customer Information windows appear,  
 click on the “Next” button after input the user name and organization.  
 The User Account Control windows appear, click on the “Yes” button.  
 The ” Setup Progress” window appears, and starts the installation.  
 When the installation is completed successfully, click on the “finish” button.

- File List on the directory.

1. Windows Executable File

- 1) OPOSLinedisplayRegister for add the object registry key.
- 2) VBOPOSLinedisplayTest for test the OPOSLinedisplay methods and properties.
- 3) RemoveOPOSLinedisplayRegister for remove the object registry keys.

## 2. OPOS COM Object

- 1) Control Object: OPOSLinedisplay.ocx
- 2) Service Object: SOLinedisplay.dll

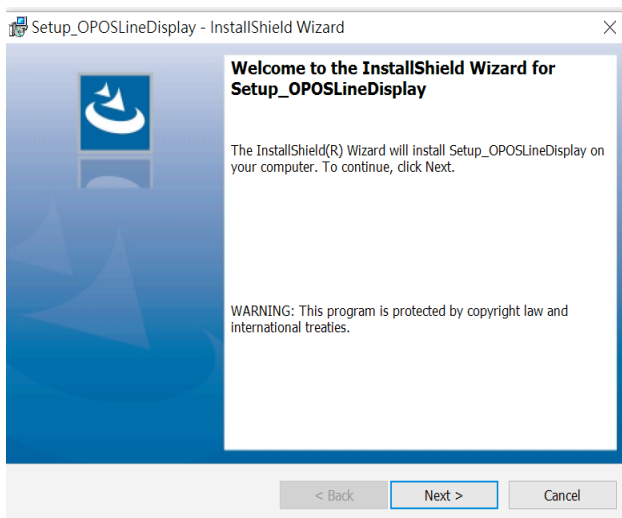


Figure 7.

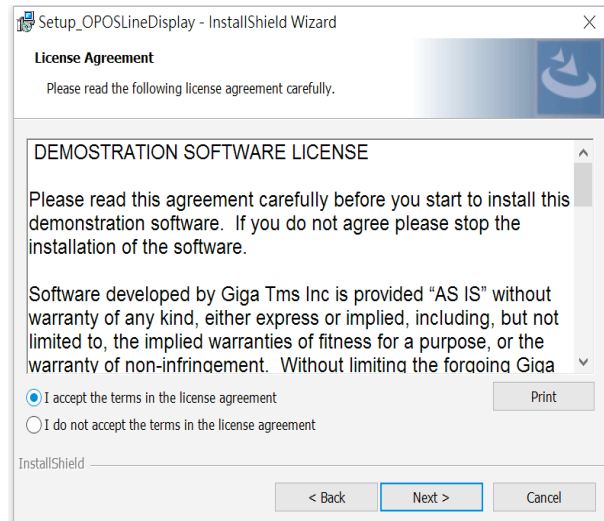


Figure 8.

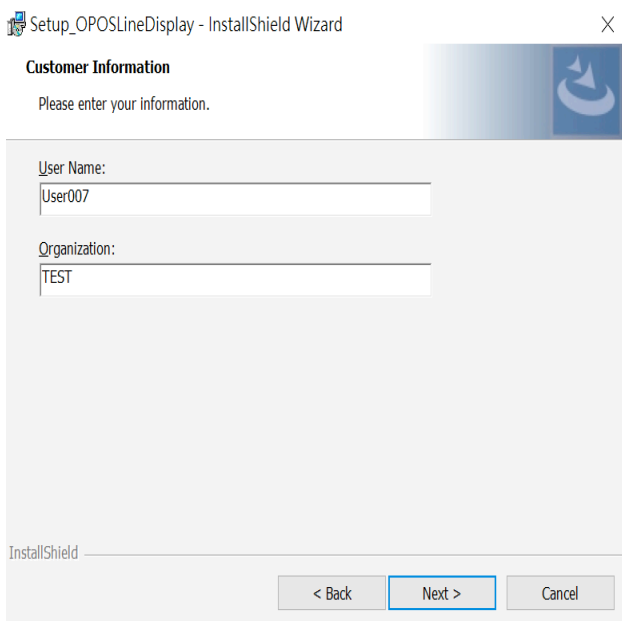


Figure 9.

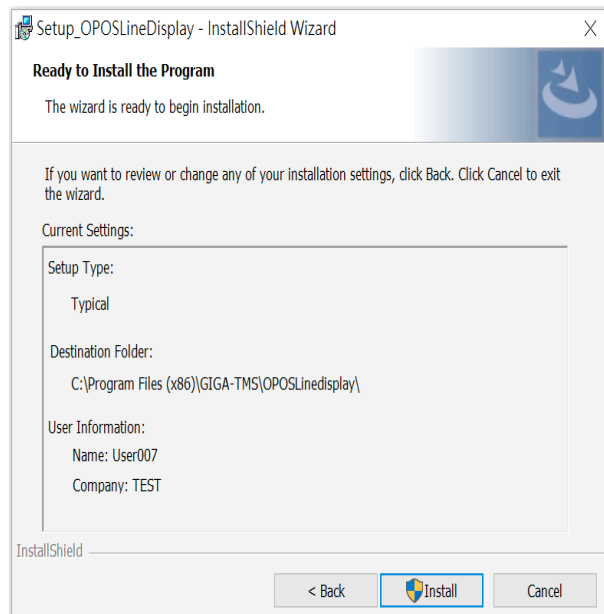


Figure 10.

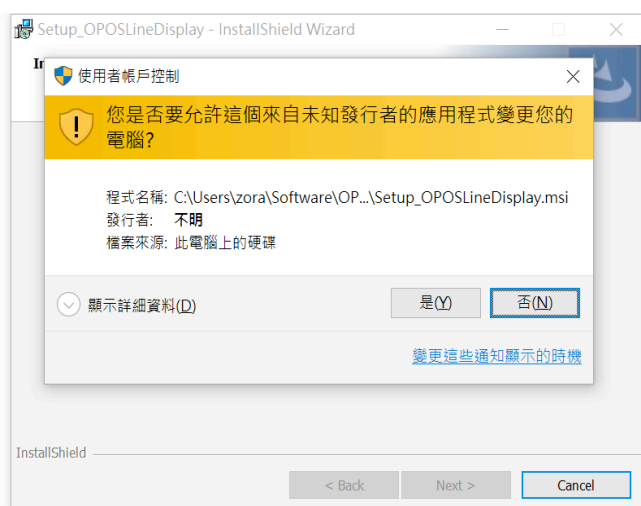


Figure 11.

# Software Settings and Test

## Set DSP840 Communication parameter

The DSP840 device communication parameter is the same as “OPOSLineDisplay”

1. The DSP840 is connected to a serial port in the computer.
2. Run “DSP840 Utility”

The DSP840 utility is a configurable software tool for settings the DSP840 device properties.

Double-clicking the icon in the **DSP840 Utility** Or Selecting the located in the **Start/All Programs/ GIGA-TMS/DSP840 Utility** on your computer.

3. Select the “Setting” page, these communication parameters must be same as the DSP840 device parameter.
4. Select the “Main(GIGA)” page, the Baud-rate : **9600**, Parity Data bits, Stop bit : **N,8,1**. Click on the “Set” button. The “Status” displays information about the device's setting result, such as “Set BaudRate AND Parity SUCCESS” or “Set BaudRate AND Parity Failure”.
5. Click x to Close the DSP840 Utility.

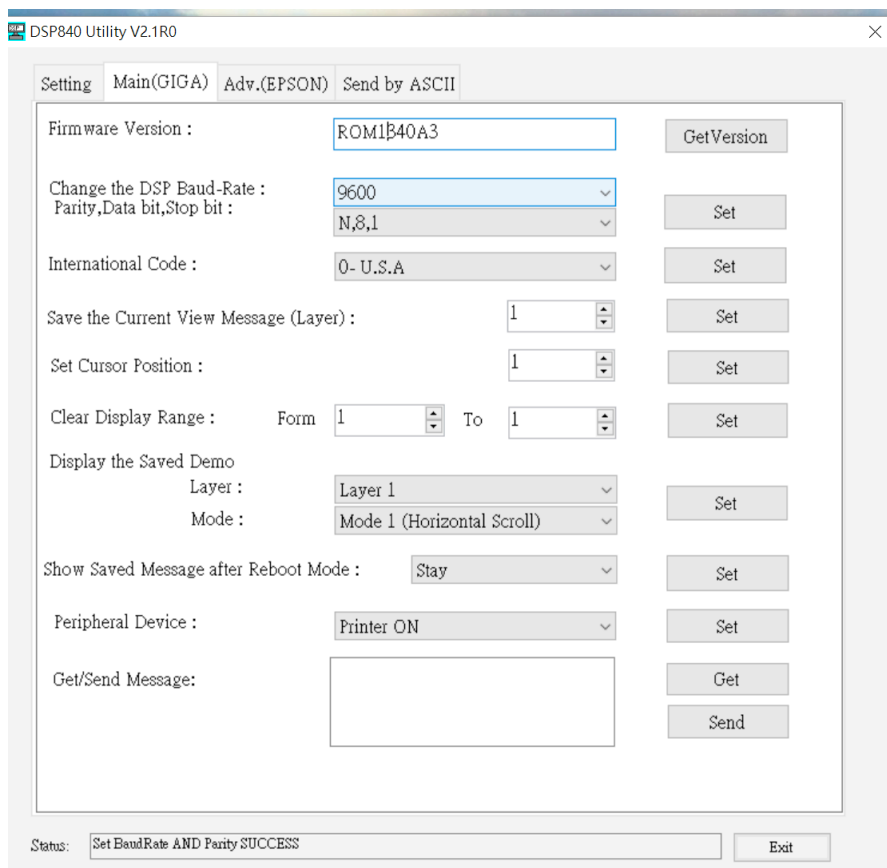


Figure 12.

## Set DSP840 OPOS Communication parameter

1. Click “OPOS<sub>Linedisplay</sub>”, selecting the located in the **Start/All Programs/ GIGA-TMS/OPOS<sub>Linedisplay</sub>** on your computer. Open the “OPOS<sub>Linedisplay</sub>” installation directory.
2. Run “OPOS<sub>Linedisplay</sub>Register.exe”, run as administrator.

C:\Program Files (x86)\GIGA-TMS\OPOS<sub>Linedisplay</sub>\OPOS<sub>Linedisplay</sub>Register.exe

1) Check the Control Object is exists.

Click on the “Check CO” button, checked “Control Object” whether that CLSID is indeed registry object.

If registry is success, the message “Control-Object does exists” will appear on the status bar, go to the 2) step.

If un-registry, the message “Control-Object does \*NOT exist” will appear on the status bar, please click on the “Register” button to registry the “OPOS<sub>Linedisplay</sub>.ocx”.

2) Registration Service Object.

1. select a “DSP840” item in the “Left” list.
2. Click on the “Reg” button, the window will appear.
3. The user can input a “Device Name” (or default ).
4. Select a COM port 、Baud-rate must the same as the DSP840 device, such as **9600, N,8,1**.
5. Click on the “OK” button. The device name has registry. It will appear on the “Right” list.



6. (If you need) Delete a “Device Name” on the “Right” list, Click on the “Unreg” button.
4. Click [X] to close the application in the window top right.

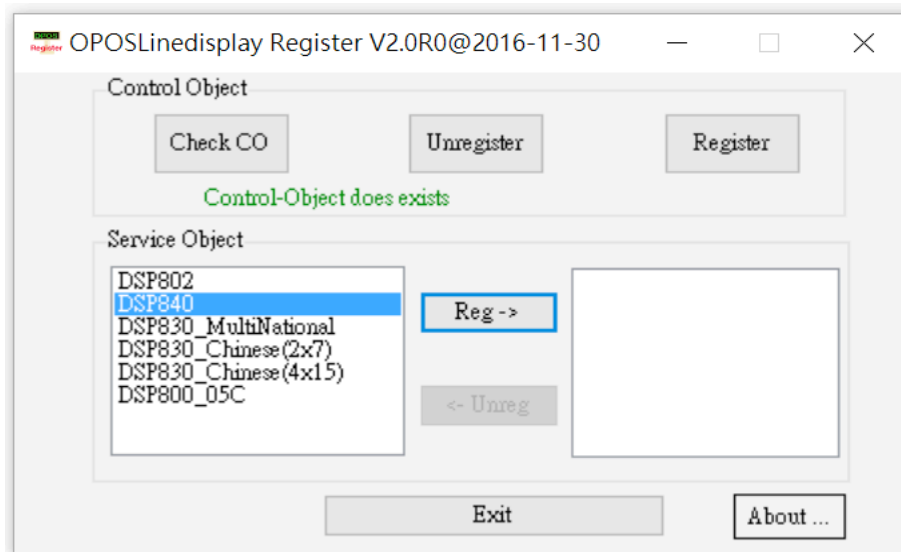


figure 13.

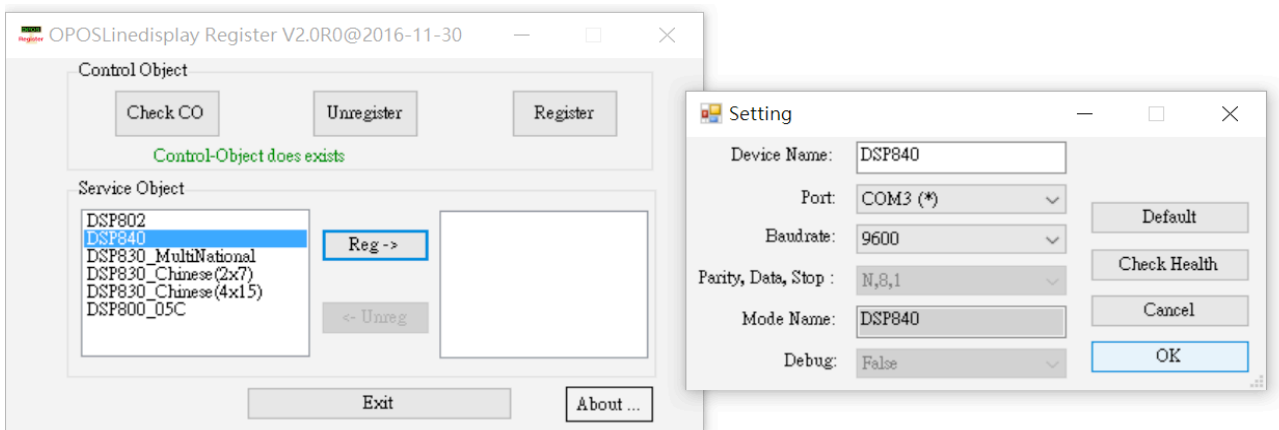


figure 14.

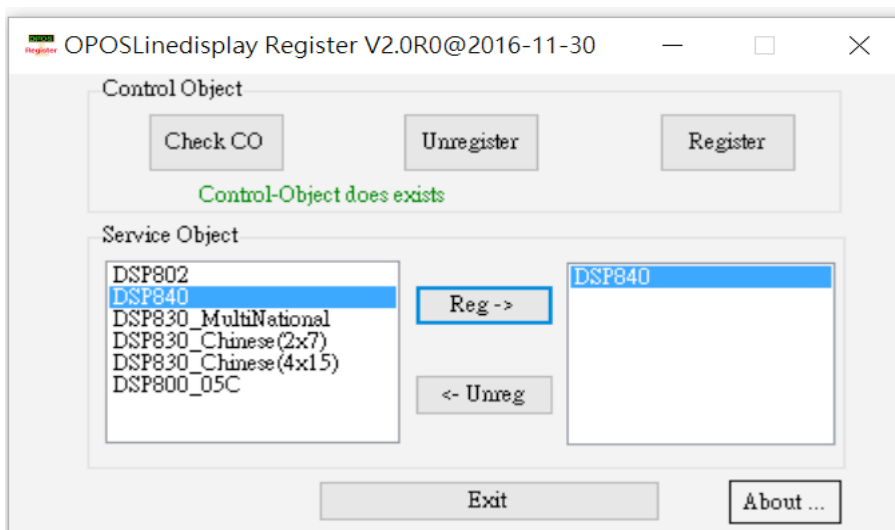


figure 15.

## DSP840 OPOS Test

1. Click “VBOPOS LinedisplayTest”, selecting the located in the **Start/All Programs/GIGA-TMS/OPOS Linedisplay** on your computer. Open the OPOS Linedisplay installation directory.

2. Run “VBOPOS LinedisplayTest.exe”

C:\Program Files (x86)\GIGA-TMS\OPOS Linedisplay\VBOPOS LinedisplayTest.exe

This program demonstrates the use of the OPOS Linedisplay. The DSP840 device is successfully display text.

1. Select a Device Name.

2. Click on the “open” button and the result is OposSuccess.

3. Click on the claim button and the result is OposSuccess.

4. Click on the “Device Enabled” button and the result is OposSuccess.

5. Click on the “Display Text” button and the result is OposSuccess.

6. see the DSP840 device’s screen show “Hello,OPOS” message.

7. Order by click on the “Device Disabled”, “Release”, “Close” button, to close DSP840 OPOS.

8. Click on “X” button to close the Application.

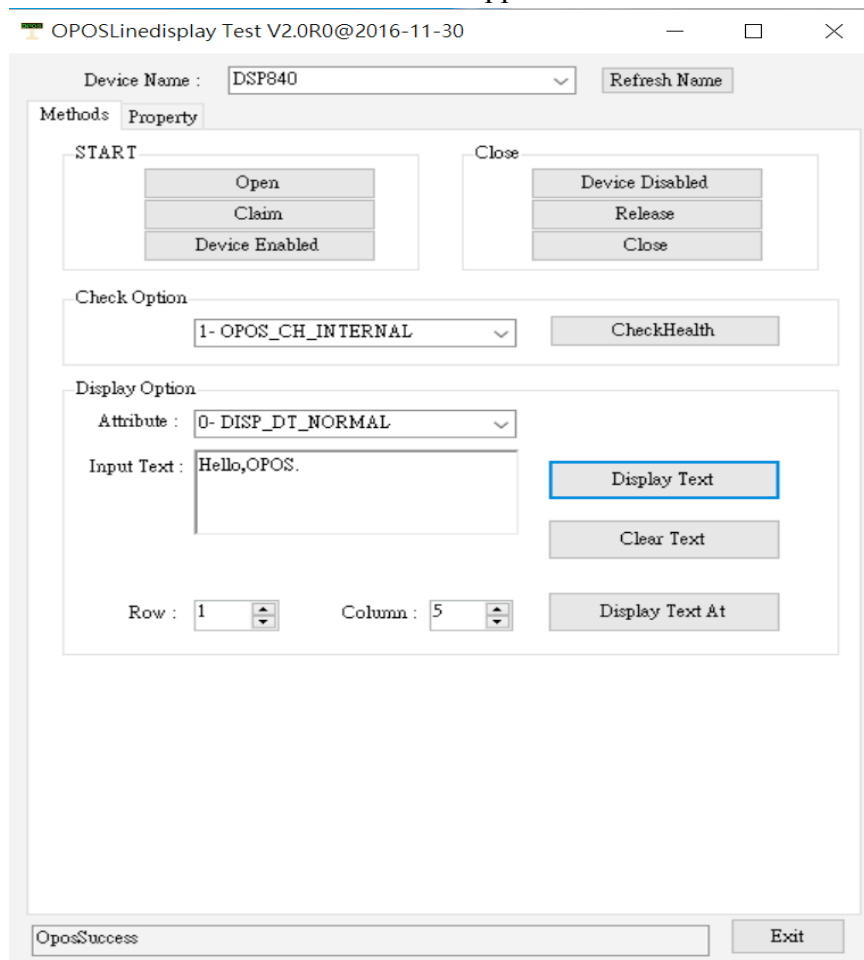


figure 16.